



Bacalhau cozido c/ batata cozida e legumes

Ingredients

Bacalhau c/ Grão Ensalsado : bacalhau posta c/lombo extra 400/600gr (BACALHAU, água e sal), grão de bico, seco(19%), cebola(2%), salsa(1%), ovo de galinha, classe L, cru (contém OVOS), azeite, Batata cozida(19%) [sal(87%), batata fresca(14%) (batata, conservante (E223) (SULFITOS))].

Nutritional Declaration (Per 100g)

Energy: 0 Kcal /0 KJ

Lipids: 0.00 g

Carbohydrates: 0.00 g

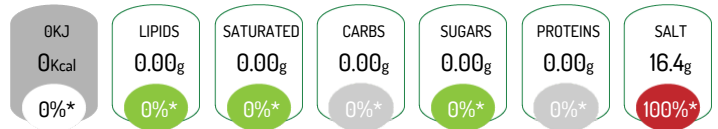
Proteins: 0.00 g

Fiber: 0.00 g

of which Saturated: 0.00 g

of which Sugars: 0.00 g

Salt: 16.4 g



*Reference intake of an average adult (8400 kJ / 2000 kcal)

Allergens



Contains: Eggs, Fish, Sulphur dioxide / sulphites

Product Characteristics

Commercial Name: Bacalhau cozido c/ batata cozida e legumes