



Pataniscas de Alheira

Ingredients

alheira Mirandela (carne de galinha, pão (farinha de TRIGO, água, sal, levedura e conservante (E282), água, carne e gordura de porco, antioxidante (E321), sal, alho antioxidante (E330), especiarias, tripa de vaca), farinha de trigo T55 sem fermento (GLUTEN), ovo de galinha, classe M (contém OVOS).

Nutritional Declaration (Per 100g)

Energy: 0 Kcal /0 KJ

Fiber: N/A

Lipids: N/A

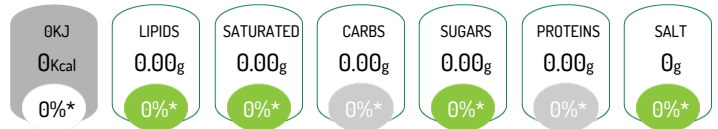
of which Saturated: N/A

Carbohydrates: N/A

of which Sugars: N/A

Proteins: N/A

Salt: 0 g



*Reference intake of an average adult (8400 kJ / 2000 kcal)

Allergens



Contains: Gluten, Eggs

Can contain traces of Soybeans

Product Characteristics

Commercial Name: Pataniscas de Alheira