



Tarte de Bacalhau

Ingredients

bacalhau posta c/lombo extra 400/600gr (BACALHAU, água e sal), massa folhada (farinha de TRIGO, gorduras e óleos vegetais (gordura de palma e óleo de girassol), água, álcool, sal, sumo de limão concentrado, agente tratamento farinha (E920)).

Nutritional Declaration (Per 100g)

Energy: 0 Kcal / 0 KJ

Fiber: N/A

Lipids: N/A

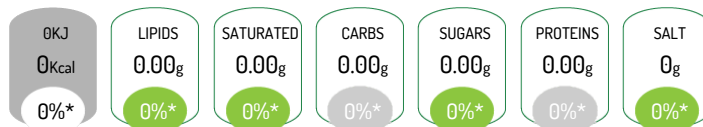
of which Saturated: N/A

Carbohydrates: N/A

of which Sugars: N/A

Proteins: N/A

Salt: 0 g



*Reference intake of an average adult (8400 kJ / 2000 kcal)

Allergens



Contains: Gluten, Fish

Can contain traces of Milk

Product Characteristics

Commercial Name: Tarte de Bacalhau