



Ingredients



Nutricional Declaration (Per 100g)

Energy: 0 Kcal / 0 KJ

Fiber: N/A

Lipids: N/A

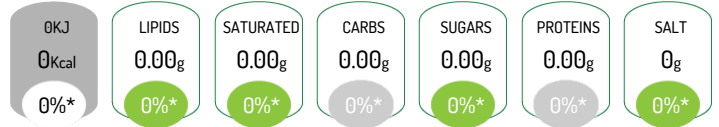
of which Saturated: N/A

Carbohydrates: N/A

of which Sugars: N/A

Proteins: N/A

Salt: 0 g



*Reference intake of an average adult (8400 kJ / 2000 kcal)

Allergens



Product Characteristics

Commercial Name: Pão de Bico