



Tintureira assada no forno

Ingredients

Tintureira assada no forno(52%): tintureira, crua(76%) (PEIXE), azeite, Tomate, cru, cebola, crua, alho, cru, sal, louro, folha, Salsa, crua. Batata assada: batata fresca(71%) (batata, conservante (E223) (SULFITOS)), Molho de carne 2 (tempero)(29%) [banha de porco(31%), óleo alimentar(27%), vinho branco(25%) (DIÓXIDO DE ENXOFRE/SULFITOS), sal(6%), alho(5%), colorau(3%), salsa(2%), farinha de trigo(2%) (GLÚTEN), louro, folha(0%)].

Nutricional Declaration (Per 100g)

Energy: 191 Kcal /800 KJ

Fiber: 0.9 g

Lipids: 15 g

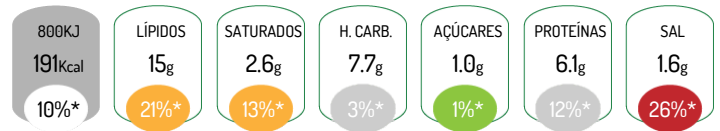
of which Saturated: 2.6 g

Carbohydrates: 7.7 g

of which Sugars: 1.0 g

Proteins: 6.1 g

Salt: 1.6 g



*Reference intake of an average adult (8400 kJ / 2000 kcal)

Allergens



Contém: Glúten, Peixe, Dióxido de Enxofre/Sulfitos

Pode conter vestígios de Aipo, Mostarda, Sementes de Sésamo

Product Characteristics

Commercial Name: Tintureira assada no forno

Conservation Instructions: Tintureira assada no forno