



## Empadão de carne

## Ingredients

batata, leite UHT meio gordo (MILK), ovo de galinha, classe L, cru (contém OVOS), margarina (óleos e gorduras vegetais (gorduras (palma), parcialmente gorduras hidrogenadas (palma), óleos (SOJA, girassol, colza, milho em diferentes proporções)), água, sal, emulsionantes (E471, E322 (SOJA)), regulador de acidez (E330), conservantes (E202), aromas (contém LEITE), corante (E160ai)).



## Nutritional Declaration (Per 100g)

Energy: 131 Kcal /550 KJ

Fiber: 1.2 g

Lipids: 6.3 g

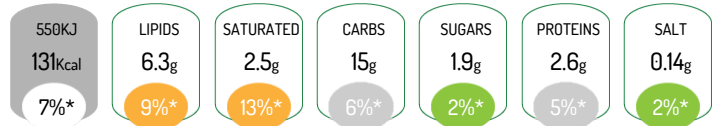
of which Saturated: 2.5 g

Carbohydrates: 15 g

of which Sugars: 1.9 g

Proteins: 2.6 g

Salt: 0.14 g



\*Reference intake of an average adult (8400 kJ / 2000 kcal)

## Allergens



Contains: Eggs, Soybeans, Milk

## Product Characteristics

Commercial Name: Empadão de carne

Conservation Instructions: Empadão de carne