



## Bacalhau à Gomes de Sá

## Ingredients

batata(49%), bacalhau desfiado / migas (FISH), cebola(17%), azeitona preta(4%) (azeitonas pretas, água, sal, regulador de acidez (E270), estabilizador de cor (E579)), azeite, alho(3%), sal(0%), ovo de galinha, classe L, cru (contém OVOS), pimenta(0%).

## Nutritional Declaration (Per 100g)

Energy: 103 Kcal /431 KJ

Fiber: 1.2 g

Lipids: 4.1 g

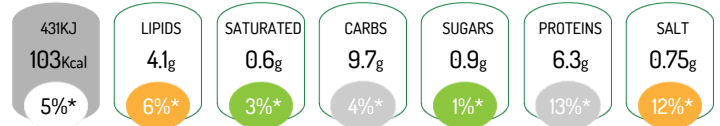
of which Saturated: 0.6 g

Carbohydrates: 9.7 g

of which Sugars: 0.9 g

Proteins: 6.3 g

Salt: 0.75 g



\*Reference intake of an average adult (8400 kJ / 2000 kcal)

## Allergens



Contains: Eggs, Fish

Can contain traces of Celery, Mustard

## Product Characteristics

Commercial Name: Bacalhau à Gomes de Sá

Conservation Instructions: Bacalhau à Gomes de Sá