



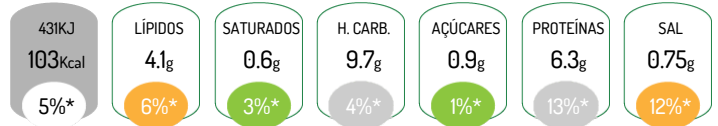
Bacalhau à Gomes de Sá

Ingredients

batata(49%), bacalhau desfiado / migas (PEIXE), cebola(17%), azeitona preta(4%) (azeitonas pretas, água, sal, regulador de acidez (E270), estabilizador de cor (E579)), azeite, alho(3%), sal(0%), ovo de galinha, classe L, cru (contém OVOS), pimenta(0%).

Nutritional Declaration (Per 100g)

Energy: 103 Kcal /431 KJ
Lipids: 4.1 g
Carbohydrates: 9.7 g
Proteins: 6.3 g
Fiber: 1.2 g
of which Saturated: 0.6 g
of which Sugars: 0.9 g
Salt: 0.75 g



*Reference intake of an average adult (8400 kJ / 2000 kcal)

Allergens



Contém: Ovos, Peixe
Pode conter vestígios de Aipo, Mostarda

Product Characteristics

Commercial Name: Bacalhau à Gomes de Sá

Conservation Instructions: Bacalhau à Gomes de Sá