



Bacalhau fiorentina

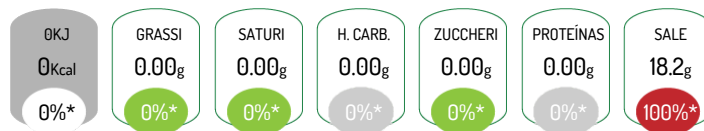
Ingredients

Molho bechamel(56%) [farinha de trigo(52%) (GLUTINE), sal(31%), nata UHT para bater, 35% MG (NATA, emulsionantes (E472b), estabilizador (E407)), noz moscada(3%)], migas de paloco(50%) (PALOCO, sal), queijo parmesão(3%) (LATTE, UOVA), noz moscada(0%), cebola(0%), salsa(0%), louro, folha(0%), azeite.



Nutricional Declaration (Per 100g)

Energy: 0 Kcal /0 KJ
Lipids: 0.00 g
Carbohydrates: 0.00 g
Proteins: 0.00 g
Fiber: 0.00 g
of which Saturated: 0.00 g
of which Sugars: 0.00 g
Salt: 18.2 g



*Reference intake of an average adult (8400 kJ / 2000 kcal)

Allergens



Contém: Glutine, Uova, Pesce, Latte

Product Characteristics

Commercial Name: Bacalhau fiorentina